



Remote controlled Wi-Fi socket with energy measurement

supla SGW-01



Remote controlled Wi-Fi socket with energy measurement

SGW-01

PRODUCT VIEW



PRODUCT DESCRIPTION

The SGW-01 is a smart Wi-Fi plug that makes it easy to introduce automation into any home without modifying the electrical installation.

The device allows you to remotely turn on and off a connected appliance with a maximum load of 3500 W, enabling you to control lighting, fans, humidifiers, heaters, and other devices from anywhere in the world. All you need is internet access and the SUPLA app.

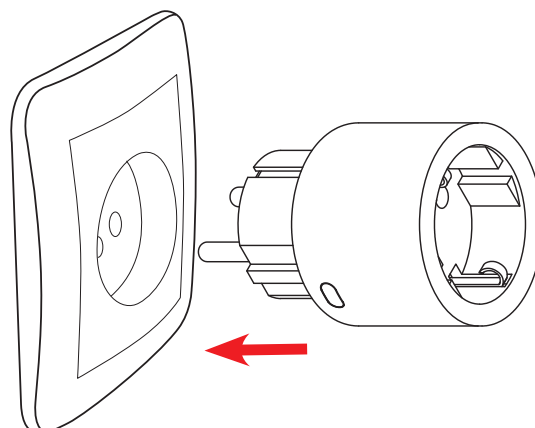
One of the key features of the SGW-01 is **energy consumption monitoring**. In the app, you can track real-time power usage and view daily, weekly, and monthly statistics, making it easier to control costs and identify the most energy-hungry devices in your home. The data is presented clearly, allowing you to easily analyse trends and optimise electricity use.

The plug also supports **voice control** compatible with popular assistants, letting you manage your devices with simple voice commands – no need to reach for your phone.

TECHNICAL DATA

SGW-01	
Rated supply voltage:	230 V ~, 50/60 Hz, 16 A
Power consumption:	1.2 W
Maximum load:	3500 W
Transmission:	Wi-Fi 2.4GHz: IEEE 802.11 b/g/n
Transmission range:	Wi-Fi range
Transmission power:	ERP < 20 mW
Use:	Indoor
Operating temperature range:	-10 ÷ +40°C
Enclosure protection rating:	IP20
Dimensions:	50 x 50 x 61.5 mm
Weight:	0.079 kg

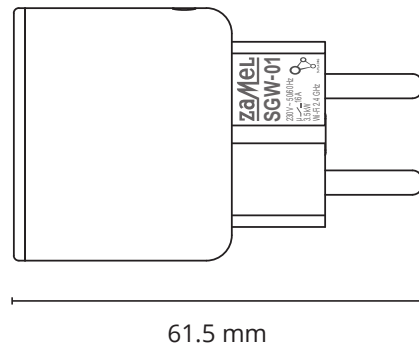
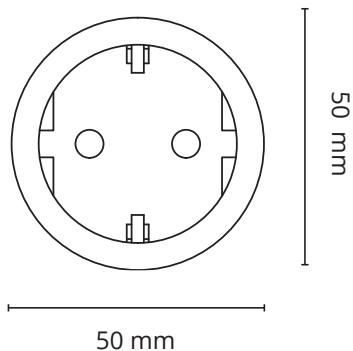
WIRING DIAGRAM



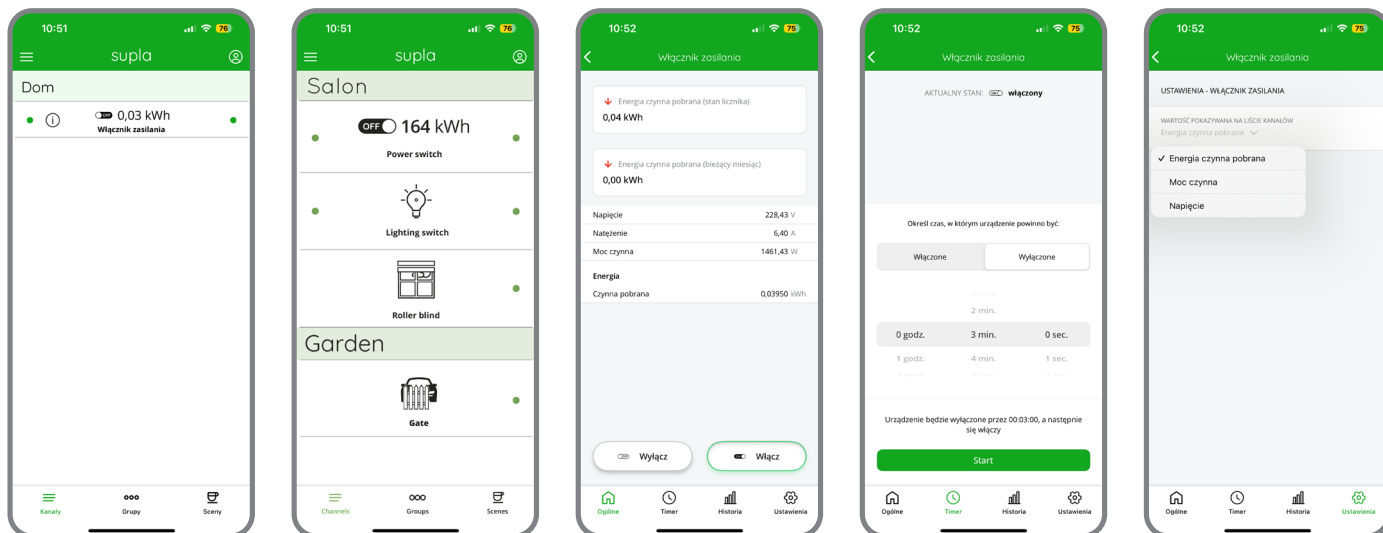
PRODUCT FEATURES

- Remote control
- Timer / schedule function
- Voice control
- Smart scenes
- Energy consumption monitoring
- Overload protection
- Maximum load: 3500 W
- Extensive integration options: API, MQTT, direct links, compatibility with popular voice assistants

DIMENSIONS AND MARKING



APPLICATION



DECLARATION OF CONFORMITY

zameL

Deklaracja Zgodności UE
EU Declaration of conformity
Nr / No: SPL/25/08/120

1 Model produktu / Product model:
SGW-01

2 Nazwa i adres producenta / Name and address of the manufacturer:
ZAMEL Sp. z o.o., ul. Zielona 27, 43-200 Paszczyna

3 Niniejsza deklaracja zgodności wydana zostaje na wyłączną odpowiedzialność producenta.
 This declaration of conformity is issued under the sole responsibility of the manufacturer.

4 Przedmiot deklaracji / Object of the declaration:
 Gniazdo zdalnie sterowane Wi-Fi z pomiarem energii /
 Remote controlled Wi-Fi socket with energy measurement

5 Wymieniony powyżej przedmiot niniejszej deklaracji jest zgodny z odpowiednimi wymaganiami unijnego prawodawstwa harmonizacyjnego.
 The object of the declaration described above is in conformity with the relevant Union harmonisation legislation:

RED 2014/53/EU
 ROHS 2011/65/EU + 2015/863 + 2017/2102
 WEEE 2012/19/EU

6 Odwołania do odrębnych norm harmonizowanych, które zastosowano, lub do innych specyfikacji technicznych, w stosunku do których deklarowana jest zgodność:
 References to the relevant harmonized standards used or references to the other technical specifications in relation to which conformity is declared:
 PN-EN IEC 62368-1:2024-06+A11:2025-01
 PN-EN 60969-1:2018-04AC:2020-04
 PN-EN IEC 60969-2:1:2023-04AC:2024-04+A11:2023-08
 PN-EN 62479:2011
 PN-EN IEC 300:2023 V2.2:2020-03
 PN-EN IEC 301:485-1 V2.2:2020-07
 PN-EN IEC 301:485-1 V2.3:1:2025-05
 PN-EN 50419:2023-05
 PN-EN IEC 63002:2019-01

7 Informacje dodatkowe / Additional information:
 Podpisano w imieniu / Signed for and on behalf of: **ZAMEL Sp. z o.o.**

Osoba upoważniona do reprezentowania producenta
 Manufacturer representative

Wojciech Dziado
 Wiceprezes Zarządu
 Vice President

Paszczyna, 2025/08/20
 Miejsce i data wystawienia
 Place and date of issue